

行星齿轮减速器 (内齿圈材质: 金属和粉末金属)

Planetary Gearbox (Ring Gear Material: Metal and Powder Metal)

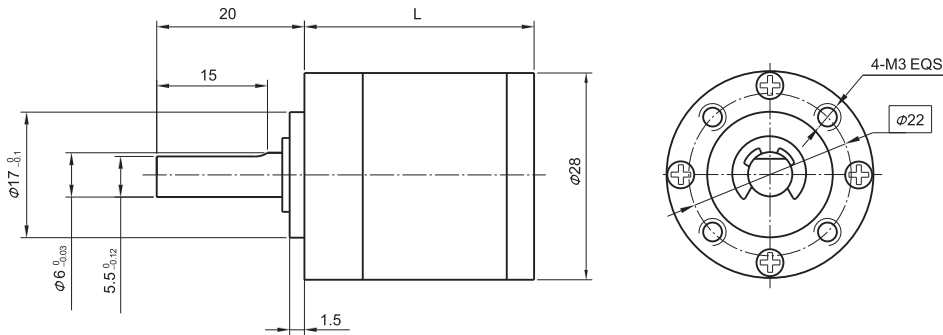
28JXE5K $\Phi 28$ 行星减速器, 允许转矩范围: 0.05N.m~0.5N.m
 28mm Planetary Gearbox
 Permissible Load Range: 0.05N.m~0.5N.m

可在两种材料的内齿圈中进行选择: 粉末金属 (型号28JXF5K), 金属 (型号28JXE5K)
 Ring gear can be selected within the two materials: Powder metal (Type:28JXF5K), Metal (Type:28JXE5K)

内齿圈材料 Ring material	E型: 金属 Metal F型: 金属粉末 Powder metal	
输出轴轴承形式 Bearing at output	含油轴承 Sleeve bearings	滚动轴承 Ball bearings
最大允许径向负载 (离法兰10mm处) Max. Radial load (10mm from flange)	≤ 16N	≤ 20N
最大允许轴向负载 Max. shaft axial load	≤ 10N	≤ 10N
径向间隙 (测量点尽量接近法兰) Radial play of shaft (near to flange)	≤ 0.08 mm	≤ 0.08 mm
轴向间隙 Axial play of shaft	≤ 0.3 mm	≤ 0.3 mm
背隙 (无负载时) Backlash at no-load	≤ 2.5°	
输出轴最大承受压入力 Shaft press fit force, max	≤ 60N	



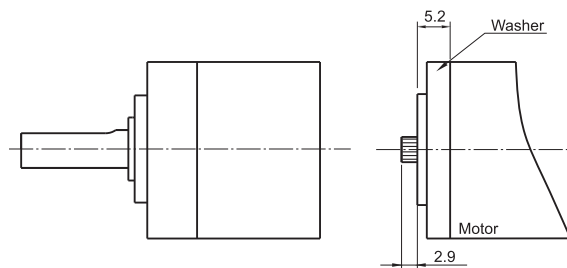
● 外形和安装尺寸 Dimensions



● 电机轴齿轮型式 Pinion Specifications

模数 Module	0.4	
齿数 No. of teeth	11	17
压力角 Pressure angle	20°	
孔径 Hole diameter	Φ2.02	Φ2.32
减速比 Reduction ratio	1/5.18 1/19 1/27 1/71 1/100 1/139 1/264 1/369 1/516 1/720	1/3.71 1/14 1/51 1/189

● 电机轴齿轮装配 Motor Installation



● 标准减速比型式 Gearbox Specifications

减速比 Reduction ratio	实际减速比 Exact reduction ratio	额定允许负载 Rated tolerance torque	瞬间允许负载 Max momentary tolerance torque	效率 Efficiency	L (mm)	重量 (g) Weight(g)
1/3.7 1/5.2	1/3.71 1/5.18	0.05 N.m	0.3 N.m	90 %	23.5 ± 0.5	68
1/14 1/19 1/27	1/13.76 1/19.22 1/26.83	0.2 N.m	1.2 N.m	81 %	26.5 ± 0.5	79
1/51 1/71 1/100 1/139	1/51.06 1/71.30 1/99.55 1/138.99	0.4 N.m	2.4 N.m	73 %	31.8 ± 0.5	98
1/189 1/264 1/369 1/516 1/720	1/189.45 1/264.52 1/369.32 1/515.66 1/719.98	0.5 N.m	3.0 N.m	66 %	37.0 ± 0.5	105

使用环境相对湿度: 20%~85%RH 使用环境温度: -10℃~+80℃ 输入与输出的旋转方向: 同向 推荐电动机最大输入转速: < 5000rpm
 Operating ambient humidity: 20%~85%RH Operating ambient temp.: -10℃~+80℃
 Input & output same rotation direction Motor Max. input speed < 5000rpm