

行星减速器和减速电机 Planetary Gearbox and Planetary Gear Motor

我们专业制造行星减速器和行星减速电机，有直行星电机、直流无刷行星电机、步进行星电机、交流行星电机。

Professional manufacturer of planetary gear motor: DC Planetary Gear Motor, BLDC Planetary Gear Motor, Planetary Gear Stepping Motor and AC Planetary Gear Motor.

请您了解我们的产品 Please Note Our Products

行星齿轮减速器采用数个行星齿轮同时传递负载，使得功率得到分流，因此比较一般的齿轮装置更加优越，具有体积小、重量轻、出力大、效率高、可靠性好的特点。我们的行星减速器品种从Φ16~Φ60，最大减速比可以达到1:3630。

Planetary gear drive use several planet wheels working at the same time to transfer the load, it can make the power dividing, with small size, light weight, large output, high efficiency and reliability. So, planetary gear drive is better than other general gear drive. Our corporation's planetary gear varieties from Φ16 ~ Φ60, the maximum reduction ratio can Reached 1:3630.



行星齿轮减速器 Planetary Gearbox

我们的行星减速器是基于模块化的系统设计，无论是小、中、大批量的订货，我们都乐意接受。

您需要特殊规格的行星减速器吗？没问题，我们可以为您提供解决方案，接受您的订单。

Our planetary motor gearboxes are based on a modular system design, suitable for small, medium and large quantities, we are willing to accept.

Do you need special specifications planetary gearboxes? No problem, we can provide solutions for you to accept your order.



永磁直行星齿轮电机
PM DC Planetary Gear Motor



无刷直行星齿轮电机
BLDC Planetary Gear Motor



交流行星齿轮电机
AC Planetary Gear Motor



混合式步进行星齿轮电机
Planetary Gear Stepping Motor

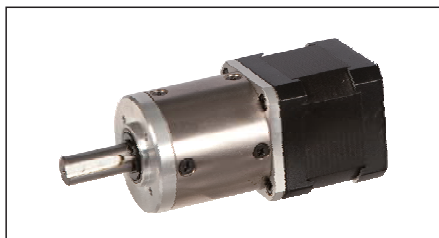


我们专业制造传动型行星齿轮减速器

根据中国国家标准GB/T 11281-2009，行星减速器分为传动型、伺服型两大类。本公司专业制造传动型行星减速器，分为精密级、较精密级两个等级，传动精度（空载空程）精密级为 $\leq 1.5^\circ$ ，较精密级为 $\leq 3^\circ$ 。我们可以根据客户的需求，制造精密级的行星减速器，有军工级、工业级。我们可以按照客户的特殊要求设计专用的产品。

We specialize in manufacturing gear type planetary gearboxes.

According to China National Standard GB / T 11281-2009, planetary gearboxes are divided into transmission type and servo type. The company's planetary gearboxes have 2 types: 'High Precision' and 'Ordinary Precision'. Transmission accuracy (no-load): 'High Precision' $\leq 1.5^\circ$, 'Ordinary Precision' $\leq 3^\circ$. We can accord to customer demand, manufacturing High precision planetary gearboxes, Including military grade and industrial grade.



用精密级行星减速器配套的步进减速电机

我们为步进电机配套的传动型精密级行星减速器，标准产品的传动精度（空载空程）为：3级减速器 $\leq 1.5^\circ$ ，2级减速器 $\leq 1.2^\circ$ ，1级减速器 $\leq 1.0^\circ$ 。如果客户为步进电机配置了磁性编码器或者光电编码器，步进电机实现闭环运行，可以替代伺服行星减速器，可以大大降低成本。

Precision planetary gearboxes supporting stepper motor

Our stepper motors support for precision planetary gearboxes Standard products driving accuracy (no-load) as follows: 3-Stage $\leq 1.5^\circ$, 2-Stage $\leq 1.2^\circ$, 1-Stage $\leq 1.0^\circ$. If the client is configured magnetic encoder or optical encoder for stepper motor, stepper motor will achieve closed-loop operation, it can replace the servo planetary gearboxes and reduce costs. precision planetary gearboxes, Including military grade and industrial grade.



用增加行星轮的数量增加负载能力

一般行星减速器是采用3个行星轮的结构，我们把行星轮的数量增加到4个、5个，可以增加减速器的负载能力。用这种方法可以减少减速器的长度，减少减速电机占用的空间尺寸。或者在长度尺寸不变的情况下，增加减速器的负载能力，可靠有效。

Increasing the number of planetary wheels to increase the load capacity

General planetary gear use three planet wheels, Increase the number of planetary wheels(4or 5), the gear unit can be increased load capacity. This method can reduce the length and the space occupied. On the other hand, Under length dimension unchanged, increasing load capacity, reliable and effective.



输入端采用螺旋齿轮（斜齿轮）增加平稳性

斜齿轮的啮合特点，轮齿是逐渐进入接触，逐渐脱离接触，同时啮合的齿数比直齿多，每个齿的单位面积受到的压力小。在输入的高速级采用斜齿，平稳性好，降低噪音的效果明显。

Input uses helical gears (helical gear) to increase stability

Characteristics of helical gears meshing gear teeth is gradually brought into contact, gradually disengage the engagement teeth at the same time more than the straight teeth, each tooth of the unit area subject to the pressure is small. High-speed level at the input of using helical, its stability is good, And the noise reduction effect is obvious.