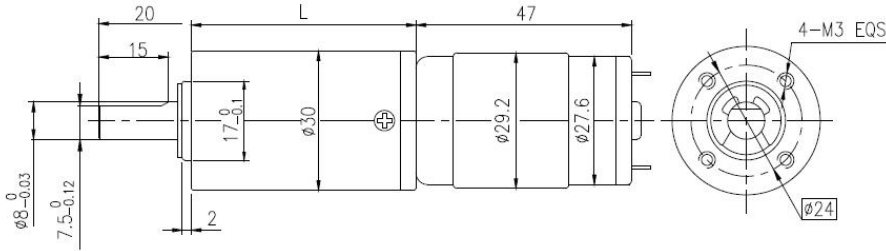


永磁直行星齿轮电机 (内齿圈材质: 金属)
 PM DC Planetary Gear Motor (Ring Gear Material: Metal)

$\Phi 30$ 行星减速器, 允许转矩范围: 0.5N.m~5.0N.m
 30mm OD Planetary Gearbox,
 Permissible Load Range: 0.5N.m~5.0N.m

28ZY47PG 采用高性能磁钢, 大转矩输出
 28ZY47PG dc planetary Gear motor adopts high performance magnetic steel, large output torque

● 外形和安装尺寸 Dimensions



● 电动机主要技术参数 Motor Technical Data

电机型号 TYPE	额定电压 Rated voltage VDC	空载转速 No-load speed r/min	空载电流 No-load current mA	额定转速 Rated speed r/min	额定转矩 Rated torque mN.m	输出功率 Output power W	额定电流 Rated current A	堵转力矩 Stall torque mN.m	堵转电流 Stall current A
28ZY47PG-1280	12	8000	270	6700	14.7	10.3	1.30	101	7.4
28ZY47PG-2480	24	8000	170	6800	15.7	11.2	0.67	117	4.3

● 齿轮减速电机主要技术参数 Gear Motor Technical Data

配置 28ZY47PG-1280 直流电机 (28ZY47PG-1280 DC Motor)

减速比 Reduction ratio	3.7	5.2	14	19	27	35	51	71	100	139	189	264	354	495
减速级数 Number of gear trains	1	1	2	2	2	2	3	3	3	3	4	4	4	4
减速器长度(L) Length(L) mm	26.9	26.9	33.8	33.8	33.8	33.8	40.7	40.7	40.7	40.7	47.6	47.6	47.6	47.6
空载转速 No-load speed r/min	2156	1544	571	421	296	229	157	113	80	58	42	30	23	16
额定转速 Rated speed r/min	1806	1293	479	353	248	191	131	94	67	48	35	25	19	14
额定转矩 Rated torque N.m	0.049	0.069	0.17	0.23	0.32	0.42	0.55	0.76	1.1	1.5	1.8	2.5	3	3
最大瞬间允许负载 Max. permissible load in a short time N.m	0.6	0.6	2.5	2.5	2.5	2.5	5	5	5	5	3	6	6	6

配置 28ZY47PG-2480 直流电机 (28ZY47PG-2480 DC Motor)

减速比 Reduction ratio	3.7	5.2	14	19	27	35	51	71	100	139	189	264	354	495
减速级数 Number of gear trains	1	1	2	2	2	2	3	3	3	3	4	4	4	4
减速器长度(L) Length(L) mm	26.9	26.9	33.8	33.8	33.8	33.8	40.7	40.7	40.7	40.7	47.6	47.6	47.6	47.6
空载转速 No-load speed r/min	2156	1544	571	421	296	229	157	113	80	58	42	30	23	16
额定转速 Rated speed r/min	1833	1313	486	358	252	194	133	96	68	49	36	26	19	14
额定转矩 Rated torque N.m	0.052	0.073	0.18	0.24	0.34	0.45	0.58	0.81	1.1	1.6	1.9	2.7	3	3
最大瞬间允许负载 Max. permissible load in a short time N.m	0.6	0.6	2.5	2.5	2.5	2.5	5	5	5	5	3	6	6	6

该产品可以根据客户需求定制

The motor can be designed & manufactured with customized request

A-11C (2023)