

永磁直行星齿轮电机 (内齿圈材质: 金属)

PM DC Planetary Gear Motor (Ring Gear Material: Metal)

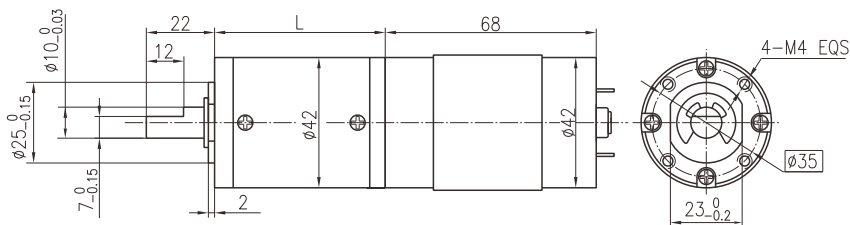
42JXH150K/42ZY68P

Φ42行星减速器, 允许转矩范围: 2N.m~15N.m

42mm OD Planetary Gearbox,

Permissible Load Range: 2N.m~15N.m

● 外形和安装尺寸 Dimensions



● 电动机主要技术参数 Motor Technical Data

电机型号 Type	额定电压 Rated voltage VDC	空载转速 No-load speed r/min	空载电流 No-load current A	额定转速 Rated speed r/min	额定转矩 Rated torque mN.m	输出功率 Output power W	额定电流 Rated current A	堵转力矩 Stall torque mN.m	堵转电流 Stall current A
42ZY68P-1270	12	7000	1.2	5700	71	41.3	5.5	310	20.5
42ZY68P-2470	24	7000	0.6	5900	58	34.7	2.1	320	10.8

● 齿轮减速电机主要技术参数 Gear Motor Technical Data

配置42ZY68P-1270直流电机 (42ZY68P-1270 DC Motor)

减速比 Reduction ratio	3.5	14	17	21	49	61	84	104	126	172	212	294
减速级数 Number of gear trains	1	2	2	2	3	3	3	3	3	4	4	4
减速器长度(L) Length(L) mm	32.5	39.2	39.2	39.2	46.0	46.0	46.0	46.0	46.0	52.5	52.5	52.5
空载转速 No-load speed r/min	2000	500	412	333	143	115	83	67	56	41	33	24
额定转速 Rated speed r/min	1629	407	335	271	116	93	68	55	45	33	27	19
额定转矩 Rated torque N.m	0.22	0.81	0.98	1.2	2.8	3.5	4.8	6.0	7.2	8.9	11	15
最大瞬间允许负载 Max. permissible load in a short time N.m	3	12	12	12	25	25	25	25	25	30	30	30

配置42ZY68P-2470直流电机 (42ZY68P-2470 DC Motor)

减速比 Reduction ratio	3.5	14	17	21	49	61	84	104	126	172	212	294
减速级数 Number of gear trains	1	2	2	2	3	3	3	3	3	4	4	4
减速器长度(L) Length(L) mm	32.5	39.2	39.2	39.2	46.0	46.0	46.0	46.0	46.0	52.5	52.5	52.5
空载转速 No-load speed r/min	2000	500	412	333	143	115	83	67	56	41	33	24
额定转速 Rated speed r/min	1686	421	347	281	120	97	70	57	47	34	28	20
额定转矩 Rated torque N.m	0.18	0.66	0.80	1.0	2.3	2.9	3.9	4.9	5.9	7.3	9.0	12
最大瞬间允许负载 Max. permissible load in a short time N.m	3	12	12	12	25	25	25	25	25	30	30	30

● 电动机特性图 Motor Characteristic Figure

