

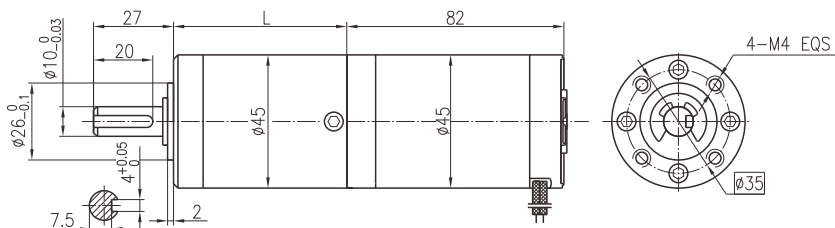
永磁直行星齿轮电机 (内齿圈材质: 金属)

PM DC Planetary Gear Motor (Ring Gear Material: Metal)

45JX100K/45ZY78

Φ45行星减速器, 允许转矩范围: 1N.m~10N.m
45mm OD Planetary Gearbox,
Permissible Load Range: 1N.m~10N.m

● 外形和安装尺寸 Dimensions



● 电动机主要技术参数 Motor Technical Data

电机型号 Type	额定电压 Rated voltage VDC	空载转速 No-load speed r/min	空载电流 No-load current A	额定转速 Rated speed r/min	额定转矩 Rated torque mN.m	输出功率 Output power W	额定电流 Rated current A	堵转力矩 Stall torque N.m	堵转电流 Stall current A
45ZY78-2430	24	3000	0.25	2400	60	15	1.0	0.24	3.0
45ZY78-2440	24	4000	0.28	3200	78	25	1.6	0.31	4.8

● 齿轮减速电机主要技术参数 Gear Motor Technical Data

配置45ZY78-2430直流电机 (45ZY78-2430 DC Motor)

减速比 Reduction ratio	3.71	5.18	14	19	27	51	71	100	139	189	264	369
减速级数 Number of gear trains	1	1	2	2	2	3	3	3	3	4	4	4
减速器长度(L) Length(L) mm	35.3	35.3	45.6	45.6	45.6	58.4	58.4	58.4	58.4	68.7	68.7	68.7
空载转速 No-load speed r/min	809	579	214	158	111	59	42	30	22	16	11	8.1
额定转速 Rated speed r/min	647	463	171	126	89	47	34	24	17	13	9.3	6.5
额定转矩 Rated torque N.m	0.20	0.28	0.68	0.92	1.3	2.2	3.1	4.4	6.1	7.4	10	10
最大瞬间允许负载 Max. permissible load in a short time N.m	3	3	12	12	12	25	25	25	25	30	30	30

配置45ZY78-2440直流电机 (45ZY78-2440 DC Motor)

减速比 Reduction ratio	3.71	5.18	14	19	27	51	71	100	139	189	264	369
减速级数 Number of gear trains	1	1	2	2	2	3	3	3	3	4	4	4
减速器长度(L) Length(L) mm	35.3	35.3	45.6	45.6	45.6	58.4	58.4	58.4	58.4	68.7	68.7	68.7
空载转速 No-load speed r/min	1078	772	286	211	148	78	56	40	29	21	15	11
额定转速 Rated speed r/min	863	618	229	168	119	63	45	32	23	17	12	8.7
额定转矩 Rated torque N.m	0.26	0.36	0.89	1.2	1.7	2.9	4.0	5.7	7.9	9.6	10	10
最大瞬间允许负载 Max. permissible load in a short time N.m	3	3	12	12	12	25	25	25	25	30	30	30

● 电动机特性图 Motor Characteristic Figure

