

永磁直行星齿轮电机 (内齿圈材质: 金属)

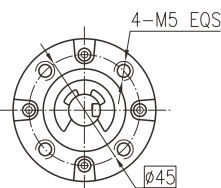
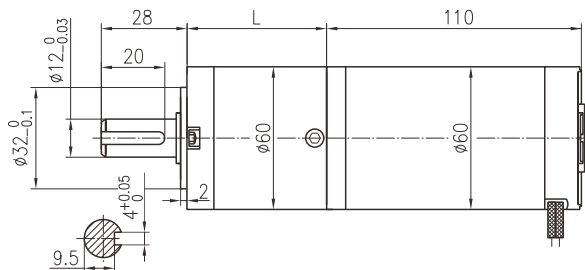
PM DC Planetary Gear Motor (Ring Gear Material: Metal)

**60JX300K/60ZY105**

Φ60行星减速器, 允许转矩范围: 2N.m~30N.m  
60mm OD Planetary Gearbox,  
Permissible Load Range: 2N.m~30N.m

A

● 外形和安装尺寸 Dimensions



● 电动机主要技术参数 Motor Technical Data

电机型号 Type	额定电压 Rated voltage VDC	空载转速 No-load speed r/min	空载电流 No-load current A	额定转速 Rated speed r/min	额定转矩 Rated torque mN.m	输出功率 Output power W	额定电流 Rated current A	堵转转矩 Stall torque N.m	堵转电流 Stall current A
60ZY105-2420	24	2000	0.32	1600	165	30	1.8	0.76	7.3
60ZY105-2430	24	3000	0.40	2400	180	45	2.2	0.79	11.2
60ZY105-2450	24	5000	0.55	4000	230	90	6.0	0.92	15.5

● 齿轮减速电机主要技术参数 Gear Motor Technical Data

配置60ZY105-2420直流电机 (60ZY105-2420 DC Motor)

减速比 Reduction ratio	3.6	4.25	13	15	18	28	47	55	65	77	96	121	154	187	220	260	307
减速级数 Number of gear trains	1	1	2	2	2	2	3	3	3	3	3	3	4	4	4	4	4
减速器长度(L) Length(L) mm	34.5	34.5	45.8	45.8	45.8	45.8	57.1	57.1	57.1	57.1	57.1	57.1	68.4	68.4	68.4	68.4	68.4
空载转速 No-load speed r/min	556	471	154	133	111	71	43	36	31	26	21	17	13	11	9.1	7.7	6.5
额定转速 Rated speed r/min	444	376	123	107	89	57	34	29	25	21	17	13	11	8.6	7.3	6.2	5.2
额定转矩 Rated torque N.m	0.53	0.63	1.7	2.0	2.4	3.7	5.7	6.6	7.8	9.2	12	15	16	20	24	28	30
最大瞬间允许负载 Max. permissible load in a short time N.m	6	6	36	36	36	36	72	72	72	72	72	72	90	90	90	90	90

配置60ZY105-2430直流电机 (60ZY105-2430 DC Motor)

减速比 Reduction ratio	3.6	4.25	13	15	18	28	47	55	65	77	96	121	154	187	220	260	307
减速级数 Number of gear trains	1	1	2	2	2	2	3	3	3	3	3	3	4	4	4	4	4
减速器长度(L) Length(L) mm	34.5	34.5	45.8	45.8	45.8	45.8	57.1	57.1	57.1	57.1	57.1	57.1	68.4	68.4	68.4	68.4	68.4
空载转速 No-load speed r/min	833	706	231	200	167	107	64	55	46	39	31	25	20	16	14	12	9.8
额定转速 Rated speed r/min	667	565	185	160	133	86	51	44	37	32	25	20	16	13	11	9.2	7.8
额定转矩 Rated torque N.m	0.58	0.69	1.9	2.2	2.6	4.1	6.2	7.2	8.5	10	13	16	18	22	26	30	30
最大瞬间允许负载 Max. permissible load in a short time N.m	6	6	36	36	36	36	72	72	72	72	72	72	90	90	90	90	90

配置60ZY105-2450直流电机 (60ZY105-2450 DC Motor)

减速比 Reduction ratio	3.6	4.25	13	15	18	28	47	55	65	77	96	121	154	187	220	260
减速级数 Number of gear trains	1	1	2	2	2	2	3	3	3	3	3	3	4	4	4	4
减速器长度(L) Length(L) mm	34.5	34.5	45.8	45.8	45.8	45.8	57.1	57.1	57.1	57.1	57.1	57.1	68.4	68.4	68.4	68.4
空载转速 No-load speed r/min	1389	1176	385	333	278	179	106	91	77	66	52	41	33	27	23	19
额定转速 Rated speed r/min	1111	941	308	267	222	143	85	73	62	53	42	33	26	21	18	15
额定转矩 Rated torque N.m	0.75	0.88	2.4	2.8	3.4	5.2	7.9	9.2	11	13	16	20	23	28	30	30
最大瞬间允许负载 Max. permissible load in a short time N.m	6	6	36	36	36	36	72	72	72	72	72	72	90	90	90	90