

永磁直行星齿轮电机 (内齿圈材质: 金属)

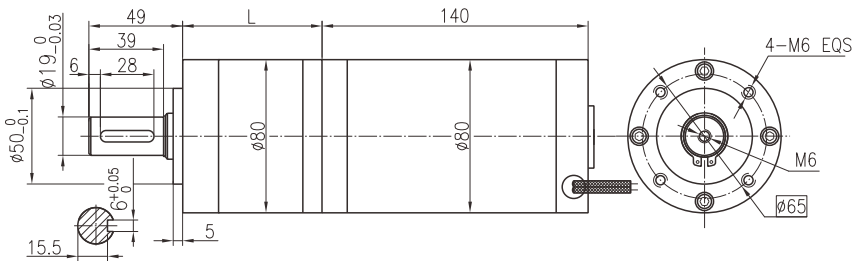
PM DC Planetary Gear Motor (Ring Gear Material: Metal)

80PMB800K/80ZYT140

Φ80行星减速器, 允许转矩范围: 8N.m~80N.m
80mm OD Planetary Gearbox,
Permissible Load Range: 8N.m~80N.m

A

● 外形和安装尺寸 Dimensions



● 电动机主要技术参数 Motor Technical Data

电机型号 Type	额定电压 Rated voltage VDC	空载转速 No-load speed r/min	空载电流 No-load current A	额定转速 Rated speed r/min	额定转矩 Rated torque N.m	输出功率 Output power W	额定电流 Rated current A	堵转力矩 Stall torque N.m	堵转电流 Stall current A
80ZYT140-2436	24	3600	2.4	2900	0.8	243	20	4.8	35

● 齿轮减速电机主要技术参数 Gear Motor Technical Data

配置80ZYT140-2436直流电机 (80ZYT140-2436 DC Motor)

减速比 Reduction ratio	3.55	5.31	6.6	13	19	23	26	30	37	50	74	92	111	138
减速级数 Number of gear trains	1	1	1	2	2	2	2	2	2	3	3	3	3	3
减速器长度(L) Length(L) mm	44.0	44.0	44.0	59.4	59.4	59.4	59.4	59.4	59.4	74.8	74.8	74.8	74.8	74.8
空载转速 No-load speed r/min	1014	678	545	277	189	157	138	120	97	72	49	39	32	26
额定转速 Rated speed r/min	817	546	439	223	153	126	112	97	78	58	39	32	26	21
额定转矩 Rated torque N.m	2.6	3.8	4.8	8.4	12	15	17	19	24	29	43	54	65	81
最大瞬间允许负载 Max. permissible load in a short time N.m	30	30	30	40	55	70	90	90	90	120	120	120	120	120

● 电动机特性图 Motor Characteristic Figure

