

无刷直流行星齿轮减速电机 (内齿圈材质: 金属)

BLDC Planetary Gear Motor (Ring Gear Material: Metal)

38JN100K/36DMW58 Φ 38行星减速器, 允许转矩范围: 1.0N.m~10N.m
38mm OD Planetary Gearbox,
Permissible Load Range: 1.0N.m~10N.m

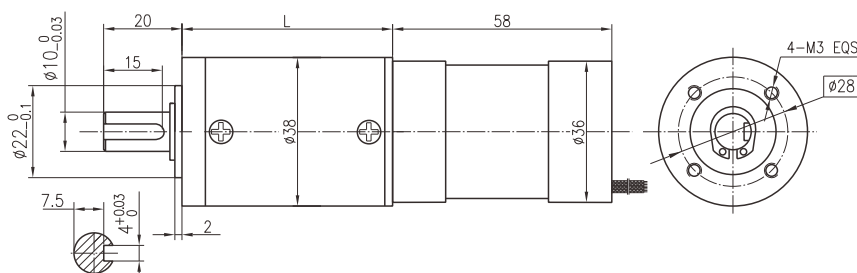
38JN100K减速器的齿轮模数0.6, 加强型的减速器
The gear modulus of '38JN80K' gearbox is 0.6, Enhanced gearbox.

● 接线方式 Wire Diagram

| U | V | W | Vcc | Ha | Hb | Hc | GND |
|--------------|-------------|------------|--------------|-----------|------------|------------|------------|
| 红 Red | 黄 Yellow | 黑 Black | 红 Red | 蓝 Blue | 绿 Green | 白 White | 黑 Black |
| 20AWG UL1569 | | | 26AWG UL1569 | | | | |



● 外形和安装尺寸 Dimensions



● 无刷电动机主要技术参数 Brushless Motor Technical Data

| 电机型号 Type | 极数 Number of poles | 相数 Number of phase | 额定电压 Rated voltage VDC | 空载转速 No-load speed r/min | 空载电流 No-load current A | 额定转矩 Rated torque mN.m | 额定转速 Rated speed r/min | 额定电流 Rated current A | 额定功率 Rated power W | 峰值扭矩 Peak torque mN.m | 峰值电流 Peak current A |
|--------------|-----------------------|-----------------------|------------------------------|--------------------------------|------------------------------|------------------------------|------------------------------|----------------------------|--------------------------|-----------------------------|---------------------------|
| 36DMW58-2465 | 4 | 3 | 24 | 6500 | 0.45 | 70 | 5000 | 2.0 | 36 | 210 | 6 |

● 无刷行星齿轮减速电机主要技术参数 Brushless Gear Motor Technical Data

配置36DMW58-2465无刷直流电机 (36DMW58-2465 BLDC Motor)

| 减速比 Reduction ratio | 3.7 | 5.2 | 14 | 19 | 27 | 51 | 71 | 100 | 139 | 181 | 218 | 253 | 305 |
|---|------|------|------|------|------|------|------|------|------|------|------|------|------|
| 减速级数 Number of gear trains | 1 | 1 | 2 | 2 | 2 | 3 | 3 | 3 | 3 | 4 | 4 | 4 | 4 |
| 减速器长度(L) Length(L) mm | 33.0 | 33.0 | 43.4 | 43.4 | 43.4 | 53.8 | 53.8 | 53.8 | 53.8 | 64.2 | 64.2 | 64.2 | 64.2 |
| 空载转速 No-load speed r/min | 1752 | 1255 | 464 | 342 | 241 | 127 | 92 | 65 | 47 | 36 | 30 | 26 | 21 |
| 额定转速 Rated speed r/min | 1368 | 965 | 357 | 363 | 185 | 98 | 70 | 50 | 36 | 28 | 23 | 20 | 16 |
| 额定转矩 Rated torque N.m | 0.23 | 0.33 | 0.79 | 1.1 | 1.5 | 2.6 | 3.6 | 5.1 | 7.1 | 8.2 | 9.9 | 10 | 10 |
| 最大瞬间允许负载 Max. permissible load in a short time N.m | 2.5 | 2.5 | 10 | 10 | 10 | 20 | 20 | 20 | 20 | 25 | 25 | 25 | 25 |