

无刷直流行星齿轮减速电机 (内齿圈材质: 金属)

BLDC Planetary Gear Motor (Ring Gear Material: Metal)

42JXGT200K/42DMW100

Φ42行星减速器, 允许转矩范围: 2.0N.m~20N.m
42mm OD Planetary Gearbox,
Permissible Load Range: 2.0N.m~20N.m

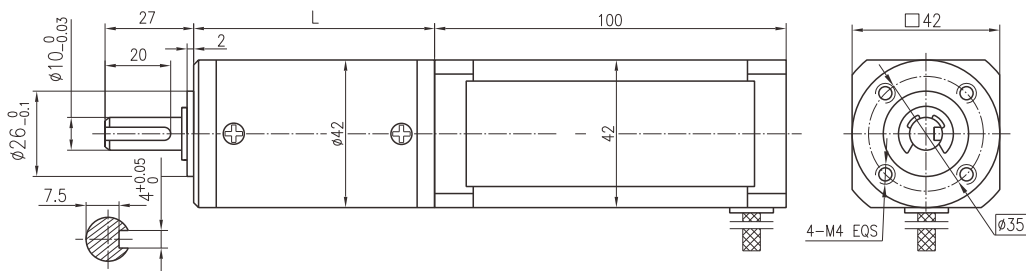
长寿命减速器, 出力级行星齿轮配置滚针轴承的设计, 型号中使用代号G
Long-lived Gearboxes, output stage planetary gear with needle bearing, The code name 'G' is used in the model.

● 接线方式 Wire Diagram

U	V	W	Vcc	Ha	Hb	Hc	GND
红 Red	黄 Yellow	黑 Black	红 Red	蓝 Blue	绿 Green	白 White	黑 Black
20AWG UL1569			26AWG UL1569				



● 外形和安装尺寸 Dimensions



● 无刷电动机主要技术参数 Brushless Motor Technical Data

电机型号 Type	极数 Number of poles	相数 Number of phase	额定电压 Rated voltage VDC	空载转速 No-load speed r/min	额定转矩 Rated torque N.m	额定转速 Rated speed r/min	额定电流 Rated current A	额定功率 Rated power W	峰值扭矩 Peak torque N.m	峰值电流 Peak current A
42DMW100-2440	8	3	24	4000	0.25	3000	5.5	78	12.8	16.5
42DMW100-2451	8	3	24	5100	0.25	4000	5.8	105	12.8	17.6

● 无刷行星齿轮减速电机主要技术参数 Brushless Gear Motor Technical Data

配置42DMW100-2440无刷直流电机 (42DMW100-2440 BLDC Motor)

减速比 Reduction ratio	4.44	17	22	65	83	106	247
减速级数 Number of gear trains	1	2	2	3	3	3	4
减速器长度(L) Length(L) mm	38.9	49.7	49.7	60.0	60.0	60.0	70.3
空载转速 No-load speed r/min	901	235	182	62	48	38	16
额定转速 Rated speed r/min	676	176	136	46	36	28	12
额定转矩 Rated torque N.m	1.0	3.4	4.5	12	15	19	20
最大瞬间允许负载 Max. permissible load in a short time N.m	6	25	25	50	50	50	60

配置42DMW100-2451无刷直流电机 (42DMW100-2451 BLDC Motor)

减速比 Reduction ratio	4.44	17	22	65	83	106	247
减速级数 Number of gear trains	1	2	2	3	3	3	4
减速器长度(L) Length(L) mm	38.9	49.7	49.7	60.0	60.0	60.0	70.3
空载转速 No-load speed r/min	1149	300	232	78	61	48	21
额定转速 Rated speed r/min	901	235	182	62	48	38	16
额定转矩 Rated torque N.m	1.0	3.4	4.5	12	15	19	20
最大瞬间允许负载 Max. permissible load in a short time N.m	6	25	25	50	50	50	60