

外转子无刷直流行星齿轮减速电机 (内齿圈材质: 金属)

Out-rotor BLDC Planetary Gear Motor (Ring Gear Material: Metal)

22JM15K/20BLW

Φ22行星减速器, 允许转矩范围: 0.15N.m~1.5N.m
22mm OD Planetary Gearbox,
Permissible Load Range: 0.15N.m~1.5N.m

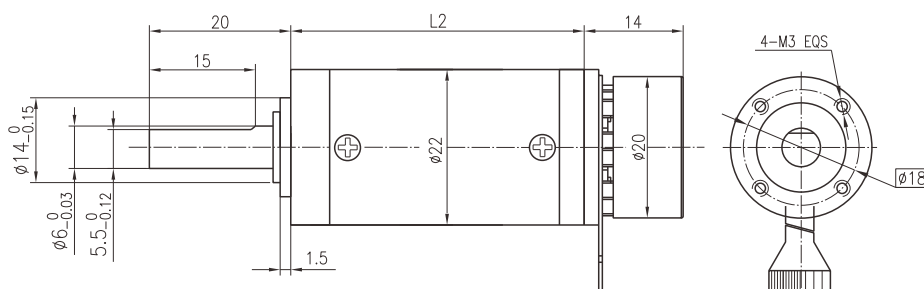
外转子电机因为转子在外面而得名, 特点是体积小(长度短)、重量轻, 而输出转矩大
The outer rotor motor gets its name because the rotor is on the outside,
and it is characterized by small size (short length), light weight, and large output torque.

● 接线方式 Wire Diagram

接插件 Connector	插针号 Pin	功能 Functions	说明 Description
FPC	1	Vcc	Hall电源输入+5VDC ~ +24VDC
	2	Hall W	
	3	Hall U	
	4	Hall V	
	5	GND	Hall 接地
	6	Phase W	
	7	Phase V	
	8	Phase U	



● 外形和安装尺寸 Dimensions



● 无刷电动机主要技术参数 Brushless Motor Technical Data

电机型号 Type	极数 Number of poles	相数 Number of phase	额定电压 Rated voltage VDC	空载转速 No-load speed r/min	额定转速 Rated speed r/min	额定转矩 Rated torque mN.m	额定功率 Rated power W	峰值转矩 Peak torque mN.m	峰值电流 Peak current A	线电阻 Line to line resistance ohms	线电感 Line to line inductance mH
FL20BLW14-12V-5105A	8	3	12	9530	5170	7.59	5	19	1.62	7.2	0.62
FL20BLW14-24V-5105A	8	3	24	9530	5220	4.74	5	20	0.85	26.1	2.6

● 无刷行星齿轮减速电机主要技术参数 Brushless Gear Motor Technical Data

配置FL20BLW14-12V-5105A无刷直流电机 (FL20BLW14-12V-5105A BLDC Motor)

减速比	Reduction ratio	3.71	5.18	14	19	27	51	71	100	139	189	264	369
减速级数	Number of gear trains	1	1	2	2	2	3	3	3	3	4	4	4
减速器长度(L)	Length(L)	mm	25.4	25.4	34.0	34.0	34.0	42.4	42.4	42.4	42.4	50.8	50.8
空载转速	No-load speed	r/min	2534	1815	671	495	348	184	132	94	68	50	36
额定转速	Rated speed	r/min	1394	998	369	272	191	101	73	52	37	27	20
额定转矩	Rated torque	N.m	0.025	0.035	0.086	0.12	0.17	0.28	0.39	0.55	0.77	0.93	1.3
最大瞬间允许负载	Max. permissible load in a short time	N.m	0.4	0.4	1.5	1.5	1.5	3	3	3	3	4	4

配置FL20BLW14-24V-5105A无刷直流电机 (FL20BLW14-24V-5105A BLDC Motor)

减速比	Reduction ratio	3.71	5.18	14	19	27	51	71	100	139	189	264	369
减速级数	Number of gear trains	1	1	2	2	2	3	3	3	3	4	4	4
减速器长度(L)	Length(L)	mm	25.4	25.4	34.0	34.0	34.0	42.4	42.4	42.4	42.4	50.8	50.8
空载转速	No-load speed	r/min	2534	1815	671	495	348	184	132	94	68	50	36
额定转速	Rated speed	r/min	1407	1008	373	275	193	102	74	52	38	28	20
额定转矩	Rated torque	N.m	0.026	0.036	0.088	0.12	0.17	0.29	0.40	0.57	0.79	0.95	1.3
最大瞬间允许负载	Max. permissible load in a short time	N.m	0.4	0.4	1.5	1.5	1.5	3	3	3	3	4	4