

## 外转子无刷直流行星齿轮减速电机 (内齿圈材质: 金属)

### Out-rotor BLDC Planetary Gear Motor (Ring Gear Material: Metal)

# 32JM50K/32BLW

Φ32行星减速器, 允许转矩范围: 0.5N.m~5.0N.m  
32mm OD Planetary Gearbox,  
Permissible Load Range: 0.5N.m~5.0N.m

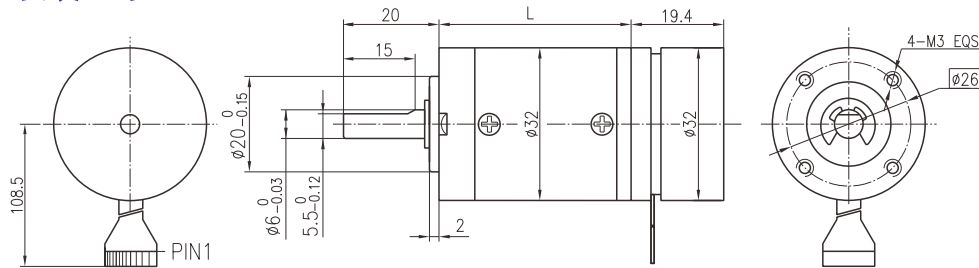
外转子电机因为转子在外面而得名, 特点是体积小(长度短)、重量轻, 而输出转矩大  
The outer rotor motor gets its name because the rotor is on the outside, and it is characterized by small size (short length), light weight, and large output torque.

### ● 接线方式 Wire Diagram

接插件 Connector	插针号 Pin	功能 Functions	说明 Description
FPC	1	Vcc	Hall电源输入+5VDC ~ +24VDC
	2	Hall W	
	3	Hall U	
	4	Hall V	
	5	GND	Hall 接地
	6	Phase W	
	7	Phase V	
	8	Phase U	



### ● 外形和安装尺寸 Dimensions



### ● 无刷电动机主要技术参数 Brushless Motor Technical Data

电机型号 Type	极数 Number of poles	相数 Number of phase	额定电压 Rated voltage VDC	空载转速 No-load speed r/min	额定转速 Rated speed r/min	额定转矩 Rated torque mN.m	额定功率 Rated power W	峰值扭矩 Peak torque mN.m	峰值电流 Peak current A	线电阻 Line to line resistance ohms	线电感 Line to line inductance mH
FL32BLW18-9V-3706A	8	3	9	3700	2100	29.5	6	73.8	3.4	2.87	1.61
FL32BLW18-12V-4607A	8	3	12	4600	2800	25.1	7	75.3	3.2	3.43	1.87
FL32BLW18-24V-4507A	8	3	24	4500	2760	25.5	7	76.5	1.7	13.7	7.73
FL32BLW18-48V-4808A	8	3	48	4800	2950	24.7	8	74.1	0.97	53	27.8

### ● 无刷行星齿轮减速电机主要技术参数 Brushless Gear Motor Technical Data

配置FL32BLW18无刷直流电机 (FL32BLW18 BLDC Motor)

减速比 Reduction ratio		3.7	5.2	14	19	27	35	49	59	68	82	95	115	181	218	253
9V	额定转速 Rated speed r/min	566	405	150	111	78	60	43	36	31	26	22	18	12	9.6	8.3
	额定转矩 Rated torque N.m	0.099	0.14	0.33	0.45	0.65	0.84	1.1	1.3	1.5	1.8	2.0	2.5	3.5	4.2	4.9
12V	额定转速 Rated speed r/min	755	541	200	147	104	80	57	47	41	34	29	24	15	13	11
	额定转矩 Rated torque N.m	0.084	0.12	0.28	0.39	0.55	0.71	0.90	1.1	1.2	1.5	1.7	2.1	3.0	3.6	4.1
24V	额定转速 Rated speed r/min	744	533	197	145	102	79	56	47	41	34	29	24	15	13	11
	额定转矩 Rated torque N.m	0.085	0.12	0.29	0.39	0.56	0.72	0.91	1.1	1.3	1.5	1.8	2.1	3.0	3.6	4.2
48V	额定转速 Rated speed r/min	795	569	211	155	109	84	60	50	43	36	31	26	16	14	12
	额定转矩 Rated torque N.m	0.082	0.12	0.28	0.38	0.54	0.70	0.88	1.1	1.2	1.5	1.7	2.1	2.9	3.5	4.1
减速级数 Number of gear trains		1	1	2	2	2	2	3	3	3	3	3	3	4	4	4
减速器长度(L) Length(L) mm		25.7	25.7	32.8	32.8	32.8	32.8	39.7	39.7	39.7	39.7	39.7	39.7	46.6	46.6	46.6
最大瞬间允许负载 Max. permissible load in a short time N.m		1.5	1.5	6	6	6	6	10	10	10	10	10	10	12	12	12