

外转子无刷直流行星齿轮减速电机 (内齿圈材质: 金属)

Out-rotor BLDC Planetary Gear Motor (Ring Gear Material: Metal)

56JM450K/90BLW

Φ56行星减速器, 允许转矩范围: 4N.m~45N.m
56mm OD Planetary Gearbox,
Permissible Load Range: 4N.m~45N.m

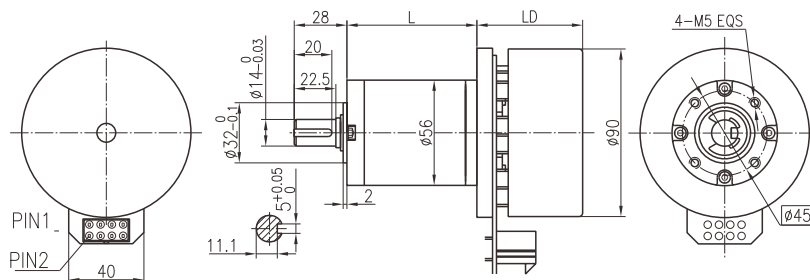
外转子电机因为转子在外面而得名, 特点是体积小(长度短)、重量轻, 而输出转矩大
The outer rotor motor gets its name because the rotor is on the outside, and it is characterized by small size (short length), light weight, and large output torque.

● 接线方式 Wire Diagram

No	Pin	接插件型号 Type	功能 Functions	说明 Description
1	PIN3	MOLEX 39-28-1083	霍尔电源正 (Vcc)	
2	PIN1		霍尔U(Hu)	
3	PIN2		霍尔V(Hv)	
4	PIN5		霍尔W(Hw)	
5	PIN6		霍尔电源负 (GND)	
6	PIN7		相U(Phase U)	
7	PIN8		相V(Phase V)	
8	PIN4		相W(Phase W)	



● 外形和安装尺寸 Dimensions



● 无刷电动机主要技术参数 Brushless Motor Technical Data

电机型号 Type	极数 Number of poles	相数 Number of phase	额定电压 Rated voltage VDC	空载转速 No-load speed r/min	额定转速 Rated speed r/min	额定转矩 Rated torque mN.m	额定功率 Rated power W	峰值扭矩 Peak torque N.m	峰值电流 Peak current A	线电阻 Line to line resistance ohms	线电感 Line to line inductance mH
FL90BLW27-24V-37130A	22	3	24	3400	2700	457	130	1.6	23	0.21	0.19
FL90BLW40-48V-16170A	22	3	48	1950	1670	964	169	3	13	0.65	0.9

● 无刷行星齿轮减速电机主要技术参数 Brushless Gear Motor Technical Data

减速比 Reduction ratio		3.60	4.25	5.33	13	15	18	23	28	43	52	61	72	96	121	154	187
FL90BLW27 24V-37130A LD=27	额定转速 Rated speed r/min	750	635	507	208	180	150	117	96	63	52	44	38	28	22	18	14
	额定转矩 Rated torque N.m	1.5	1.8	2.0	4.8	5.6	6.7	8.5	10	14	17	20	24	32	36	45	45
FL90BLW40 48V-16170A LD=40	额定转速 Rated speed r/min	464	393	313	128	111	93	73	60	39	32	27	23	17	-	-	-
	额定转矩 Rated torque N.m	3.1	3.7	4.2	10	12	14	18	22	30	37	43	45	45	-	-	-
减速级数 Number of gear trains		1	1	2	2	2	2	2	2	3	3	3	3	3	3	4	4
减速器长度(L) Length(L)	mm	40.3	40.3	53.8	53.8	53.8	53.8	53.8	53.8	67.2	67.2	67.2	67.2	67.2	67.2	80.6	80.6
最大瞬间允许负载 Max. permissible load in a short time	N.m	12	12	36	36	36	36	36	36	72	72	72	72	72	72	90	90