

混合式步行星齿轮减速电机 (内齿圈材质: 金属)

Planetary Gear Stepping Motor (Ring Gear Material: Metal)

22JMDS20K/20STH

Φ22 行星减速器, 允许转矩范围: 0.2N.m~2.0N.m
22mm Planetary Gearbox
Permissible Load Range: 0.2N.m~2.0N.m

整数减速比的行星减速器

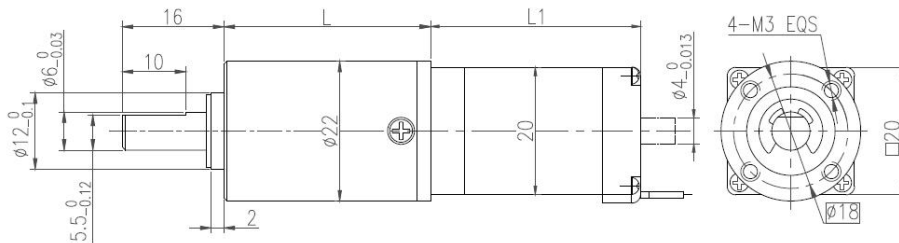
Integer reduction ratio of planetary gear motor

行星齿轮减速器 Planetary Gearbox

输出轴轴承形式 Bearing at output	含油轴承 Sleeve bearings	滚动轴承 Ball bearings
最大允许径向负载 (离法兰 10mm 处) Max. Radial load (10mm from flange)	40N	50N
最大允许轴向负载 Max. shaft axial load	30N	30N
径向间隙 (测量点尽量接近法兰) Radial play of shaft (near to flange)	≤0.1 mm	≤0.08 mm
轴向间隙 Axial play of shaft	≤0.3 mm	≤0.3 mm



外形和安装尺寸 Dimensions



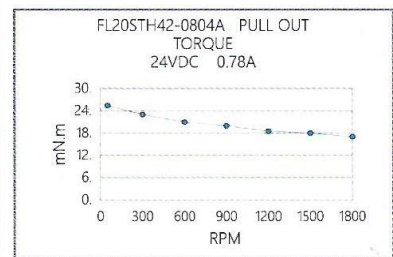
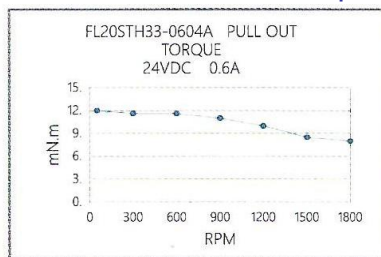
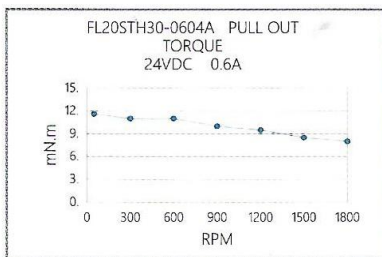
20STH 混合式步进电机性能 20STH Hybrid Stepping Motor Specifications

Model No.	每相电流 Current /Phase	每相电阻 Resistance /Phase	每相电感 Inductance /Phase	保持转矩 Holding Torque	定位转矩 Detent Torque	引出线数 # of Leads	转动惯量 Rotor Inertia	重量 Weight	长度 L1 Length L1
单轴 Single Shaft	A	Ω	mH	N.m	N.m		g-cm ²	kg	mm
20STH30-0604A	0.6	6.5	1.7	0.018	0.002	4	2.0	0.06	30
20STH33-0604A	0.6	6.5	1.7	0.018	0.002	4	2.0	0.06	33
20STH42-0804A	0.8	5.4	1.5	0.03	0.002	4	3.6	0.08	42

行星减速器性能 Planetary Gearbox Specifications

减速比 Reduction ratio	4	6	16	19	24	36	64	76	96	144	171	216
精确减速比 Accurate Reduction Ratio	4.00	6.00	16.00	19.00	24.00	36.00	64.00	76.00	96.00	144.00	171.00	216.00
减速级数 Number of gear trains	1		2				3					
减速器长度(L) Length(L) mm	22.9		29.3				35.7					
最大额定转矩 Max. rated torque N.m	0.2		0.8				1.6					
瞬间允许转矩 Short time permissible torque N.m	0.6		2.4				4.8					
效率 Efficiency %	90%		81%				73%					
平均背隙(无负载时) Backlash at no-load	0.5°		1.0°				1.5°					
重量 Weight g	30		35				40					

20STH 混合式步进电机矩频曲线 20STH Pull Out Torque Curve



该产品可以根据客户需求定制

The motor can be designed & manufactured with customized request