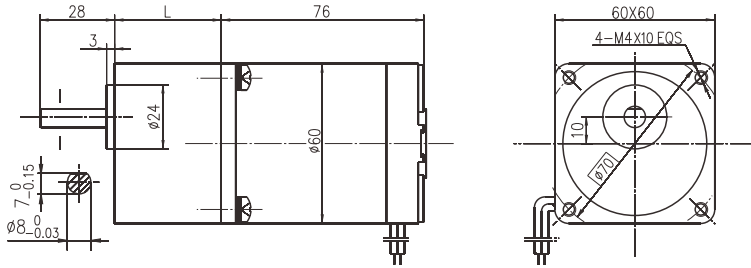


# 60JB50K/60ZY75

60JB一体式减速器, 允许转矩范围: 5.0N.m  
60mm Integrated Gearbox,  
Permissible Load Range: 5.0N.m

长寿命减速器, 合金结构钢齿轮, 全部滚动轴承的配置  
Long-lived Gearboxes, Alloy structural steel gears, all using rolling bearings

## ● 外形和安装尺寸 Dimensions



## ● 电动机主要技术参数 Motor Technical Data

电机型号 Type	额定电压 Rated voltage VDC	空载转速 No-load speed r/min	空载电流 No-load current A	额定转速 Rated speed r/min	额定转矩 Rated torque mN.m	输出功率 Output power W	额定电流 Rated current A	堵转转矩 Stall torque mN.m	堵转电流 Stall current A
60ZY75-2420	24	2000	0.3	1600	50	8	0.8	215	2.1
60ZY75-2430	24	3000	0.4	2400	70	17	1.2	296	5.0
60ZY75-2440	24	4000	0.5	3200	90	30	2.2	404	8.5

## ● 齿轮减速电机主要技术参数 Gear motor Technical Data

配置60ZY75-2420直流电机 (60ZY75-2420 DC Motor)

减速比 Reduction ratio	3	5	7.5	10	12.5	15	25	30	50	75	90	100	120	150
减速级数 Number of gear trains	2	2	2	2	2	2	3	3	3	4	4	4	4	4
减速器长度(L) Length(L) mm	32	32	32	32	32	32	40	40	40	40	40	40	40	40
空载转速 No-load speed r/min	667	400	267	200	160	133	80	67	40	27	22	20	17	13
额定转速 Rated speed r/min	533	320	213	160	128	106	64	53	32	21	18	16	13	10.5
额定转矩 Rated torque N.m	0.13	0.22	0.33	0.44	0.55	0.66	1.0	1.2	2.0	2.7	3.1	3.6	4.3	5.0
最大瞬间允许负载 Max. permissible load in a short time N.m	2.5	2.5	2.5	2.5	2.5	2.5	5.0	5.0	5.0	10	10	10	10	10
转向 Direction of rotation	CW	CW	CW	CW	CW	CW	CCW	CCW	CCW	CW	CW	CW	CW	CW

配置60ZY75-2430直流电机 (60ZY75-2430 DC Motor)

减速比 Reduction ratio	3	5	7.5	10	12.5	15	25	30	50	75	90	100	120	150
减速级数 Number of gear trains	2	2	2	2	2	2	3	3	3	4	4	4	4	4
减速器长度(L) Length(L) mm	32	32	32	32	32	32	40	40	40	40	40	40	40	40
空载转速 No-load speed r/min	1000	600	400	300	240	200	120	100	60	40	33	30	25	20
额定转速 Rated speed r/min	800	480	320	240	192	160	96	80	48	32	26	24	20	16
额定转矩 Rated torque N.m	0.17	0.28	0.42	0.56	0.7	0.85	1.2	1.5	2.5	3.8	4.5	5.0	5.0	5.0
最大瞬间允许负载 Max. permissible load in a short time N.m	2.5	2.5	2.5	2.5	2.5	2.5	5.0	5.0	5.0	10	10	10	10	10
转向 Direction of rotation	CW	CW	CW	CW	CW	CW	CCW	CCW	CCW	CW	CW	CW	CW	CW

## ● 电动机特性图 Motor Characteristic Figure

